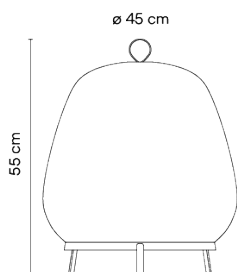


## 7490

Design By Meike Harde

Due to its large size, the Knit floor lamp takes centre stage, drawing people towards it by attracting their gazes, while its fabric shade has a welcoming tactile quality. The ring in its upper part makes it easily portable.

### Model Sheet



<b>Finish</b>	24 Beige M1 NCS S 2005-Y50R
<b>LED temperature color</b>	2700 K
<b>Dimming</b>	Push / Casambi
<b>Installation type</b>	Plug-in

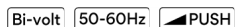
**Materials** Fabric Shade: PES FR  
Diffuser ring and support: ABS  
Diffuser: PMMA

**Light source** 6 x LED 5,9W 1050mA



**LED** CRI>90 4740 lm 133.9  
2700 K

**Driver** Constant Voltage 1050  
100-240 V V 50-60 Hz HZ



**Application** Floor and Table Lamps

**Packaging** 1 Box  
0,55 m x 0,55 m x 0,65 m  
Gross weight 5,4  
Net weight 3,3  
Vol. 0,1966

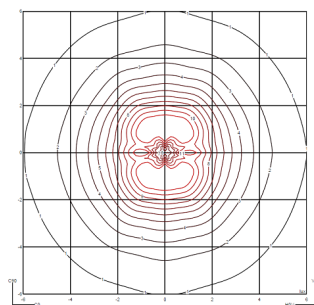
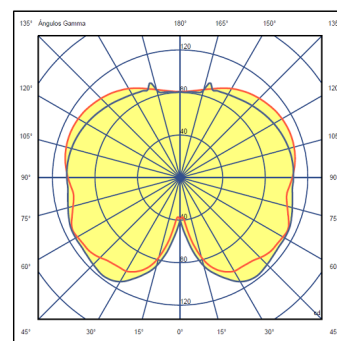
#### Lighting effect

##### Volumetric Diffuser

Subtly directed, diffused light that generates a soft hierarchy of light on to the illuminated surface

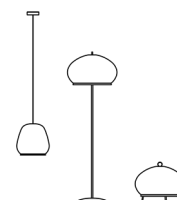


#### Photometric Data



**Efficiency** 50.38 lm/W  
**Coordinate System** CG  
**Total Flux** 1286.57 lm  
**Maximum Value** 125.33 cd

#### Other Applications



All of our products come with a five-year warranty. Check our legal terms at [www.vibia.com/warranty](http://www.vibia.com/warranty)

**Vibia Lighting, S.L.U.**

Office / Oficina  
Progrés 4-6. 08850 Gavà. Barcelona, Spain.

International T +34 934 796 971  
Spain / Portugal T +34 934 796 970

customer.service@vibia.com  
vibia.com