

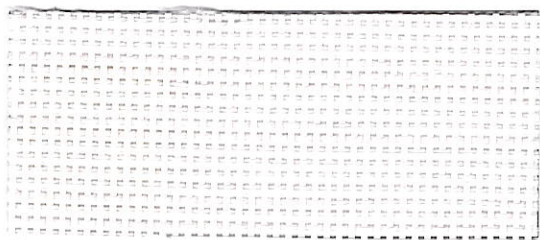
HOUSSES

AA
100%

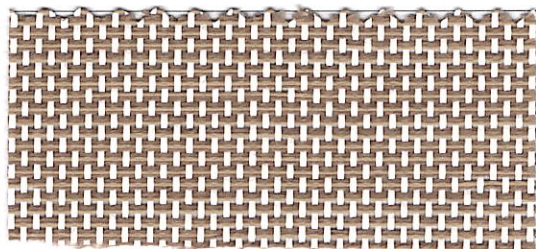
BATYLINE

OUTDOOR

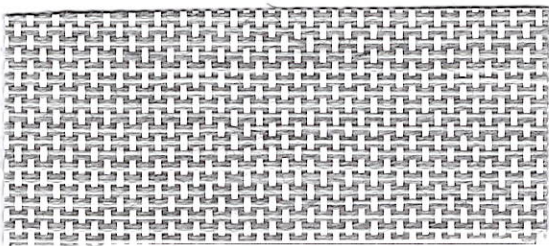
MADE IN FRANCE



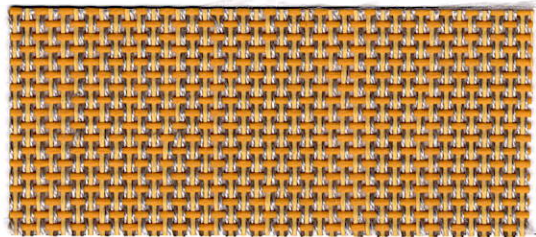
Blanc



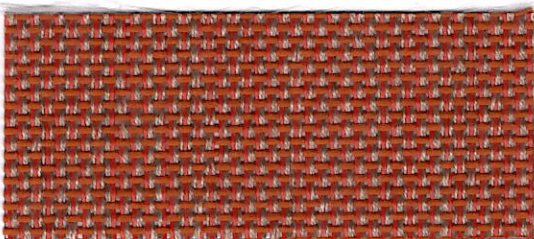
Ecru



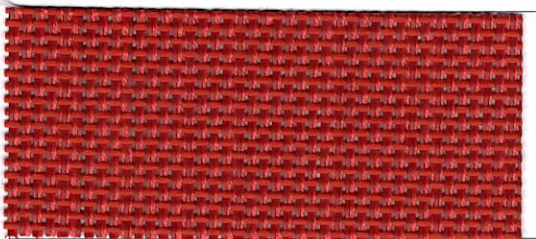
Gris Clair



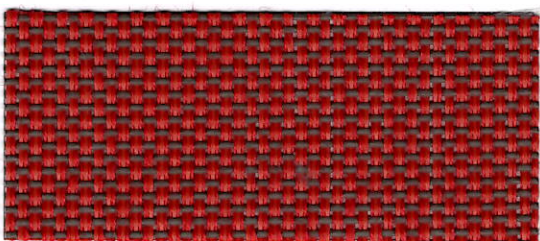
Jaune



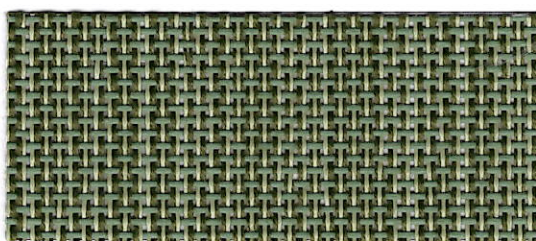
Orange



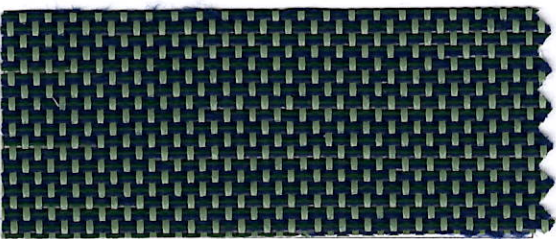
Sanguine



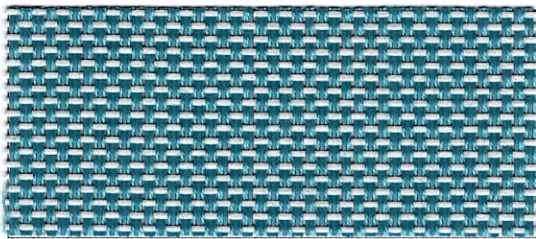
Rouge



Vert amande



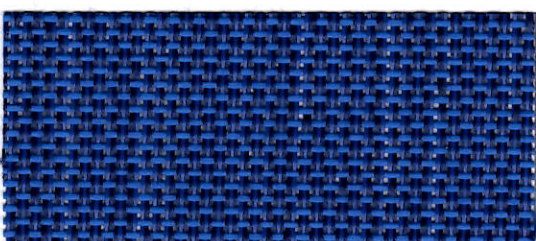
Vert foncé



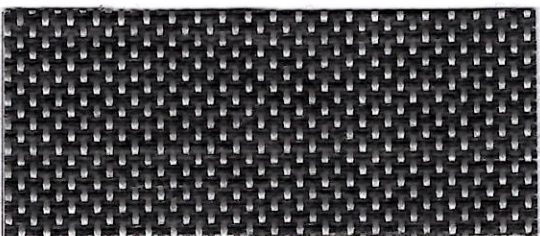
Récif



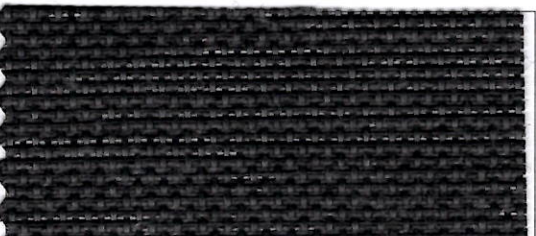
Bleu Lagon



Bleu Océan



Gris Chiné



Noir

Les housses en Batyline Eden

Association de fils gainés et synthétiques, une technologie exclusive Serge Ferrari. Toucher doux et effet matière naturelle. Reste frais en été et sèche rapidement. Haute résistance en environnement extérieur (UV, humidité, températures, moisissure). Durabilité des couleurs.

Disponibles en 14 couleurs
Outdoor

Entretien

Il est conseillé de procéder à un entretien régulier à l'aide d'une brosse souple ou d'une éponge et d'utiliser un détergent à Ph neutre. Rincer abondamment à l'eau claire après nettoyage et sécher avant stockage. Tenir à l'écart des étincelles/des flammes nues/des surfaces très chaudes.

Batyline Eden cover

Combination of sheathed and synthetic yarns, an exclusive Serge Ferrari technology. Soft feel and natural material effect. Stays cool in summer, dries quickly. High resistance to outdoor environments (UV, humidity, temperatures, mould). Colourfast.

*Available in 14 colours
Outdoor*

Care and maintenance

Regular cleaning using a soft brush or sponge and a PH neutral detergent is recommended. After cleaning, rinse thoroughly with fresh water, and dry before storage. Keep away from naked flame and hot surfaces.



Photo Eric Matheron Balây